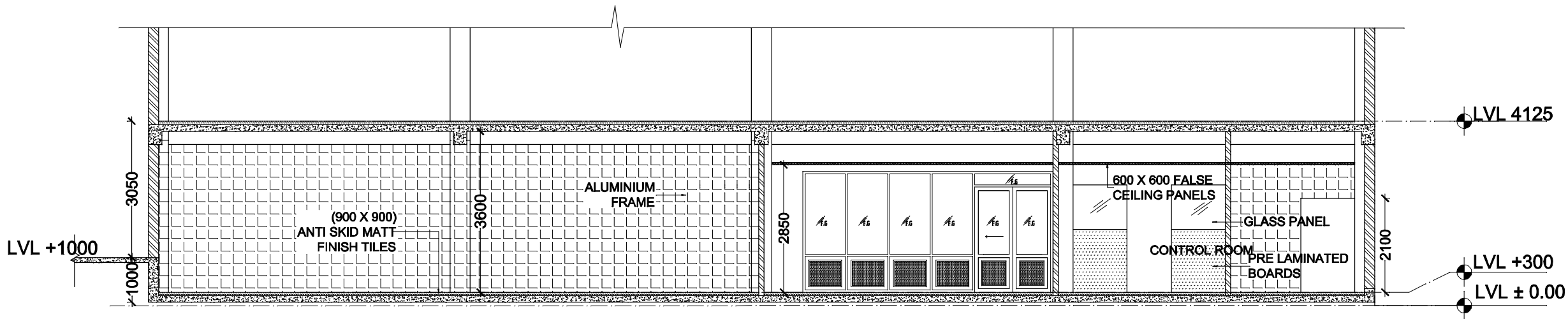


SECTION AA'

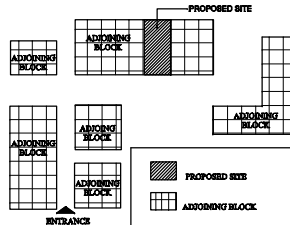


SECTION BB'

GMSD - MUMBAI

DRAWING

KEY PLAN



- NOTES:**
1. This drawing is copyright.
 2. This drawing should not be reproduced or handed over to third party without consent of competent authority.
 3. Do not scale from this drawing.
 4. All dimensions are in millimetres unless noted otherwise.
 5. These drawings are only indicative and not to be used for construction on site.
 6. Do not make any structural changes on site. The same are not recommended.

S.NO.	REVISION (READ DOWNWARD)	DATE
1.		
2.		
2.		
1.		
S.NO.	ISSUED TO (READ UPWARD)	DATE

PROJECT
UPGRADATION OF COLD CHAIN FACILITIES IN THE GOVERNMENT MEDICAL STORE DEPOTS AT DELHI KARNAL, HYDERABAD, MUMBAI, CHENNAI KOLKATA & GUWAHATI.

SECTIONS & DETAILS	SCALE
(MUMBAI)	
TITLE	DATE

OWNER:-

ARCHITECT:-

AR DWG.NO.: GMSD/MUM/AR/02
DEALT BY:

ARCHITECT :
SURINDER SAWHNEY ASSOCIATES
ARCHITECTS & DESIGN CONSULTANTS
571, SECTOR-18-B, CHANDIGARH
E-MAIL: surindersawhney@sify.com
PH:0172-2780535, FAX : 0172-2726627.